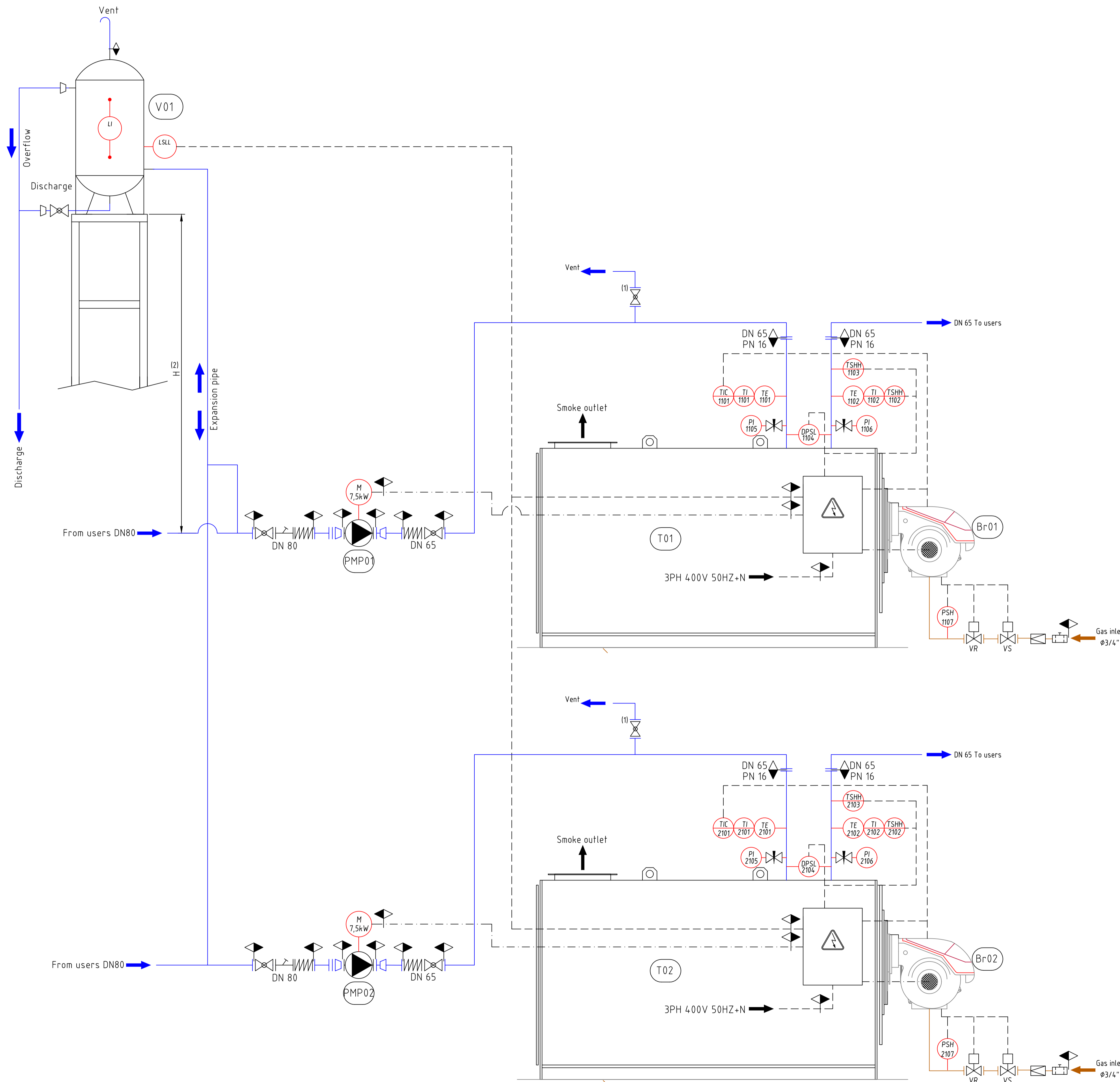


NOTES

- (1) Install vents on plant highest points
- (2) Pump NPSH = 1,9m
The minimum height depends on the type of oil and the operating temperature. In any case the tank shall be at least 1m above the plant highest point
- (3) Install expansion joints where necessary



REV.	DATA	MODIFICHE	DIS.	APP.
-	-	-	-	-
-	-	-	-	-
-	-	-	-	-

SYMB.	INSTRUMENTS
PSL/PSH	PRESSURE SWITCH MAX/MIN
PI	PRESSURE GAUGE
TSHH	TEMPERATURE SWITCH
TIC	TEMPERATURE REGULATOR
TSH	TEMPERATURE SWITCH
TI	TEMPERATURE GAUGE
TE	TEMPERATURE SENSOR
LSHH	MAX LEVEL SWITCH
LE	LEVEL PROBE
LI	LEVEL INDICATOR
LSLL	MIN LEVEL SWITCH
DPSL	DIFFERENTIAL PRESSURE SWITCH

SYMB.	DESCRIPTION
☒	GLOBE VALVE
⊗	BALL VALVE
⊘	NEEDLE VALVE
⊕	SAFETY VALVE
⊖	CHECK VALVE
⊙	STRAINER
⊚	Y-STRAINER
⊛	CONCENTRIC PIPE REDUCER
⊜	PRESSURE REDUCER
⊝	SOLENOID VALVE
⊞	VENT PIPE
⊟	CENTRIFUGAL PUMP
⊠	GEAR PUMP
⊡	MOTOR

POS	DESCRIPTION
T01	THERMAL OIL HEATER TH550S OIL CONTENT 175L
T02	THERMAL OIL HEATER TH550S OIL CONTENT 175L
BR01	BRUCIATORE WEISHAUP T WM-G10/3-A
BR02	BURNER FOR NATURAL GAS WEISHAUP T WM-G10/3-A
P01	OIL CIRCULATION PUMP JONHSON PUMP COMBITHERM 40C-160 CL / CI
P02	OIL CIRCULATION PUMP JONHSON PUMP COMBITHERM 40C-160 CL / CI
V01	ATMOSPHERIC EXPANSION TANK OUT OF SUPPLY - THE CAPACITY DEPENDS ON THE TOTAL PLANT OIL CONTENT

— (Orange)	GAS	--- (Dashed)	SIGNAL CABLE
— (Blue)	TEHRMAL FLUID	— (Solid)	POWER CABLE

GARIONI NAVAL
COMMITTENTE

DESIGNER'S SIGN	 <small>INDUSTRIAL AND MARINE HEATING SYSTEMS A brand of svecom</small>	SVECOM-P.E. S.r.l. Via della Tecnica, 4 36075 MONTECCHIO MAGGIORE (VI) Tel. 0444/7746211		APPROVED BY	SUBSTITUTES DWG N°	
		VERIFIED	JOB N° 20C8007	IA. N.A.		
		DRAWN BY lb	SCALE -	REVISION -		
		NR.2 TH550 P&I DRAWING	DATE 11/01/2021	DRAWING N° 2102 PID		

QUESTO DISEGNO E' DI NOSTRA ESCLUSIVA PROPRIETA', E' VIETATO A TERMINI DI LEGGE RIPRODURLO O DIVULGARLO A TERZI SENZA LA NOSTRA AUTORIZZAZIONE
ALL RIGHTS RESERVED - DO NOT SPREAD OR TAKE DRAWING OFF WITHOUT OUR PERMISSION